

High protection and high availability

- The **ITYS** series is a range of compact UPS systems available in the following models: 1, 2, 3, 6 and 10 kVA with on-line double conversion technology (VFI) and sinusoidal absorption.
- **ITYS** guarantees permanent regulation of output voltage and frequency. This technology is compatible with all IT and industrial applications, operating environments and when used in conjunction with a generator set.
- The wide tolerance of the input voltage limits the number of switchovers to battery mode, thus significantly prolonging the battery life.
- The automatic bypass takes over immediately in the event of overloads or faults, ensuring continuous power supply to the loads.

Simple to install and easy to use

- The UPS comes ready for power up with the internal batteries connected and fully charged. The auto restart function assures automatic restart even in the event of prolonged power failure.
- **ITYS** UPS systems are easy to install requiring no special plant preparation as they have built-in magneto-thermal protection.
- The intuitive LED command / control panel and buzzer make the system easy to use. The power distribution graphic display shows at-a-glance if the system is working correctly or not. Battery health can be checked either via the control panel or using a remote PC.

Operating efficiency and versatility

- The versatility of these models means that they can be used to protect a wide range of applications: from professional IT systems, corporate networks and critical devices in industrial contexts.
- The standard configuration and the communications accessories can easily be adapted to a wide range of operating environments.
- The manual bypass means that on site periodic and / or emergency maintenance can be performed on the 6 and 10 kVA models without having to disconnect the loads. The communication software can be used to program scheduled start-up and shutdown where automatic power management procedures are required.

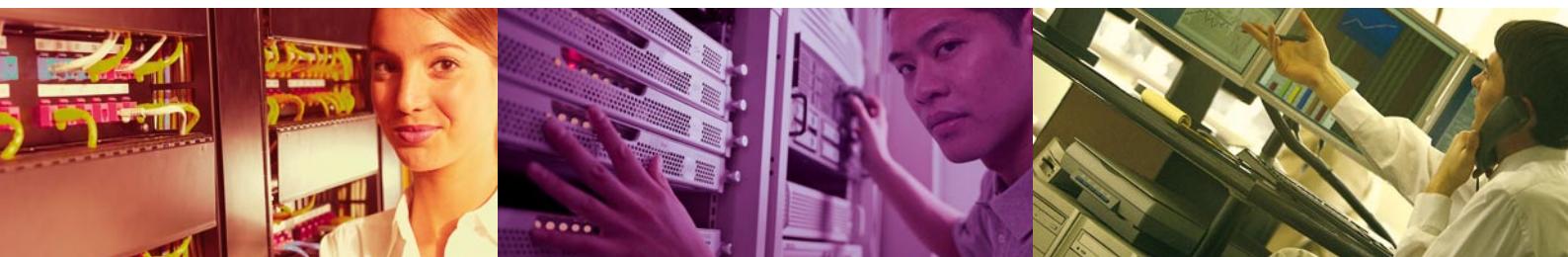
Communication option

- Dry contacts interface for insertion in the rear slot shows the status of the UPS via 5 potential-free contacts and provides an input for remote emergency power off (EPO).
- **UNI VISION** software for the control and automatic shutdown of applications connected to Windows™ and Linux. Free download from our website: www.socomec.com.
- **UNI VISION PRO** software for management of connected applications and to control automatic shutdowns. Serial cable included.
- **NET VISION** Interface SNMP / WEB manager for connection of the UPS to the Ethernet network. This accessory can be integrated in the UPS by means of the slot located on the back panel.



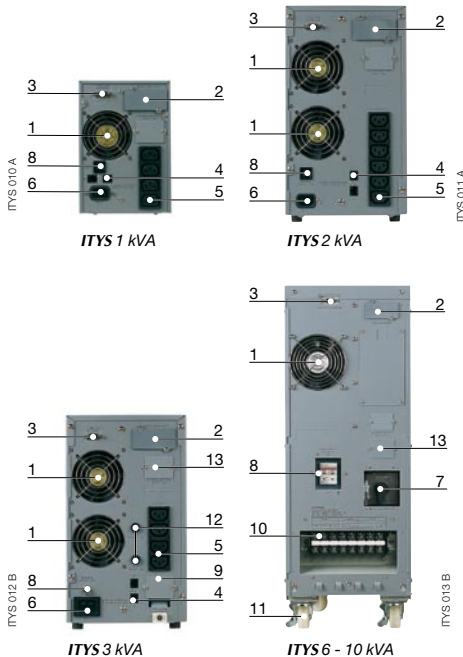
Your protection
for

- > Professional workstations
- > Server and corporate networks
- > Storage systems
- > Industrial automation
- > Security systems
- > Telecom systems



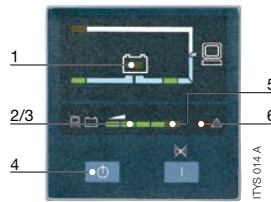


Connection



1. Fan
2. Slot for optional communication boards
3. RS232 serial port (JBUS protocol)
4. Telephone / modem / ASDL line protection
5. Output sockets (IEC 320)
6. Input socket (IEC 320)
7. Manual by pass
8. Input protection (Thermal breaker)
9. Output terminals
10. Input / output terminals
11. Wheels with security lock
12. Selective protection fuse on output sockets
13. Connection for external battery cabinet (LB models only).

The command / control panel



- Graphic operating status:
1. Battery indicator
 2. LED bar - % of connected load
 3. LED bar - % battery available

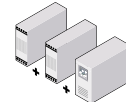
4. On / off button and deactivation of the buzzer
5. Overload indicator
6. Fault indicator

Battery extension (available with LB models only)



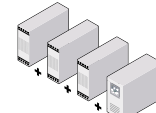
ITYS	UPS +1 EBM
3 000	30 min. +1 (ITY-EX030B)
6 000	50 min. +1 (ITY-EX0100B)
10 000	27 min. +1 (ITY-EX0100B)

(@ 75% of nominal load)



ITYS	UPS +2 EBM
3 000	75 min. +2 (ITY-EX030B)
6 000	100 min. +2 (ITY-EX0100B)
10 000	58 min. +2 (ITY-EX0100B)

(@ 75% of nominal load)



ITYS	UPS +3 EBM
3 000	120 min. +3 (ITY-EX030B)
6 000	150 min. +3 (ITY-EX0100B)
10 000	90 min. +3 (ITY-EX0100B)

(@ 75% of nominal load)

Technical data

POWER VA / WATT	1000 VA / 700 W	2000 VA / 1400 W	3000 VA / 2100 W	6000 VA / 4200 W	10000 VA / 7000 W
ITEM CODE	ITY-TW010B	ITY-TW020B	ITY-TW030B/LB	ITY-TW060B/LB	ITY-TW100B/LB
INPUT					
Input voltage	230 V AC (160÷300 V AC ; up to 110 V AC at 60 % of the load)			230 V AC (176÷276 V AC)	
Frequency	50 / 60 Hz nominal				
Power factor	0.98				
OUTPUT					
Output voltage (Vout)	230 V AC (can be set to 220 / 240 V AC) ± 1.5 %			230 V AC (can be set to 220 / 240 V AC) ± 1 %	
Output frequency stability (for 50 Hz)	Syncro range 46÷54 Hz (50 ± 0.2 Hz in battery mode)			Syncro range 46÷54 Hz (50 Hz ± 0.05 Hz in battery mode)	
Overload (with mains present)	Up to 150 % for 30 seconds			Up to 130 % for 10 minutes	
Global efficiency	Up to 90 %				
Acceptable crest factor	3:1				
Communication port	RS 232 on DB9 connector				
BACK UP TIME*					
75 % of the nominal load (min.)	10	17	9	13	9
PHYSICAL					
Noise level (at 1 m)	45 dB			55 dB	
UPS dimensions W x D x H (mm)	145 x 400 x 220	192 x 460 x 350		260 x 570 x 715	
Colour (Pantone scale)	Case 430C ; plastic panel 431C				
UPS net weights (kg)	14	34	35/16	84/35	93/38
COMPLIANCE WITH STANDARDS					
Standards	EN62040 and CE marking / IEC 60529 (IP20)				
Safety / EMC standard	(EN) IEC 62040-1-1 (safety) EN50091-2 / IEC62040-2 (EMC) - Equipped with input filters to eliminate atmospheric disturbance				

* at 25 °C with efficient battery.

HEAD OFFICE

SOCOMECS GROUP

S.A. SOCOMEC capital 11 102 300 € - R.C.S. Strasbourg B 548 500 149
B.P. 60010 - 1, rue de Westhouse - F-67235 Benfeld Cedex

SOCOMECS UPS Strasbourg

11, route de Strasbourg - B.P. 10050 - F-67235 Huttenheim Cedex- FRANCE
Tel. +33 (0)3 88 57 45 45 - Fax +33 (0)3 88 74 07 90
ups.benfeld.admin@socomec.com

SOCOMECS UPS Isola Vicentina

Via Sila, 1/3 - I - 36033 Isola Vicentina (VI) - ITALY
Tel. +39 0444 598611 - Fax +39 0444 598622
info.it.ups@socomec.com

www.socomec.com

SALES, MARKETING AND SERVICE MANAGEMENT

SOCOMECS UPS Paris

95, rue Pierre Grange
F-94132 Fontenay-sous-Bois Cedex - FRANCE
Tel. +33 (0)1 45 14 63 90 - Fax +33 (0)1 48 77 31 12
ups.paris.dcm@socomec.com

Non contractual document. © 2008, Socomec SA. All rights reserved.

